



Project Parking for GBLabs Space Storage

marquis



Archive or Transfer Avid projects onto GBLabs Space Storage using Project Parking



SHARED STORAGE OPTIMISATION

Project Parking speeds up the daily, weekly shared storage admin processes enabling personnel to focus on critical or revenue making tasks.

With the native support of GBLabs Space storage, Avid Projects and media are efficiently managed between Avid shared storage and Space Echo and Space storage. The combined solution provides flexibility when optimising Avid media and projects ensuring assets are archived or transferred on high performance and accessible GBLabs storage.

Project Parking provides tools to analyse, manage and optimise Avid online shared storage with extensive and secure archive/transfer of Avid Projects and associated media to GBLabs Storage.

CREATE A COMPLETE PROJECT ARCHIVE WITH EASE

Park your projects to take them off-line or simply to keep them safe. Archive and restore whole projects: all the bins, sequences and media files, or only archive the bins that are important.

AGILE BIN RESTORATION

Restore whole/partial projects and media back from your GBLabs storage archive, or individual bins to any other project. Merge a new version of a project with any other online project.

DIRECT INTEGRATION WITH GBLABS

Project Parking is directly integrated with the Space Storage expanding and extending production and post production storage capability via high performance 1GbE or 10GbE connections ensuring fast and efficient archiving, restoring and transferring of Avid Projects and media.

Archive or transfer your projects directly into GBLabs Storage thanks to Project Parking's direct API integration, including MD5 checksum comparison and validation after archive/transfer completion.

**Project Parking for
GBLabs Space Storage
enables you to archive and
restore whole projects: all
the bins, sequences and
media files, 3rd party files
or only archive the bins
that are important.**

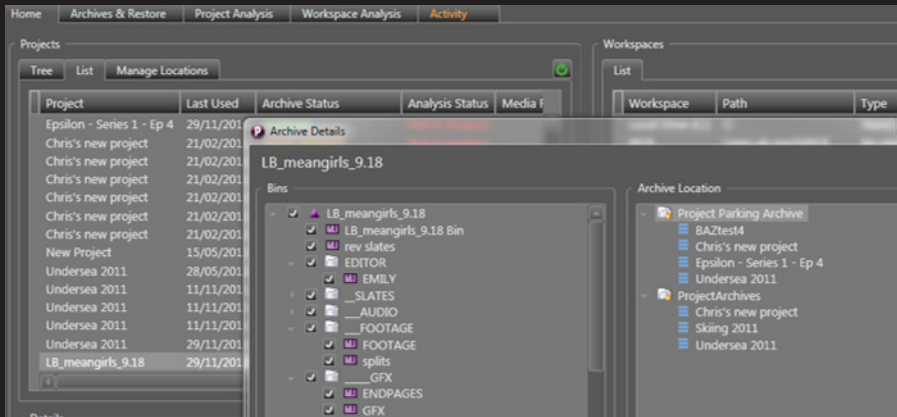
**GBLabs multi-tier storage
systems are integrated
with Project Parking to
provide customers with
additional archive or
parking storage accessible
as required.**

Marquis Broadcast Limited
Phone +44 (0)118 984 4111
Email info@marquisbroadcast.com
www.marquisbroadcast.com



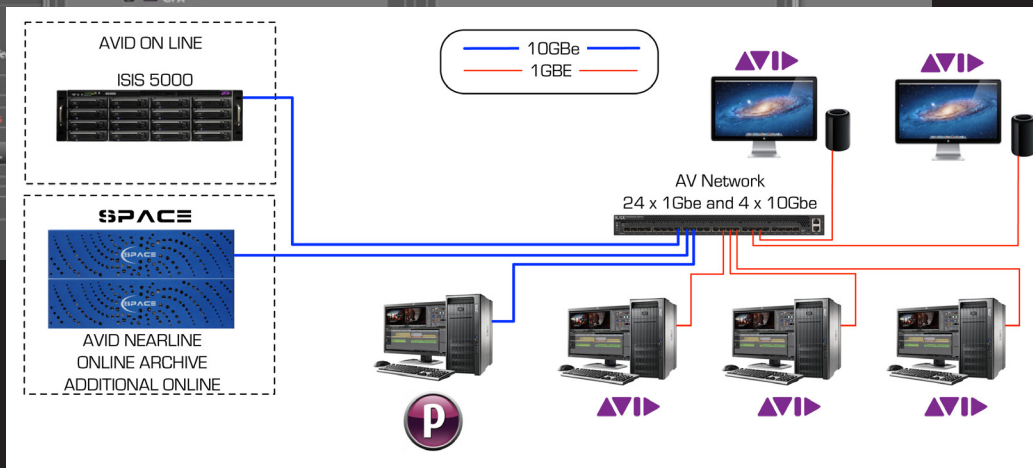
Project Parking for GB Labs Space Storage

marquis



ARCHIVE & RESTORE
Project Parking takes a complete snapshot of your project: all its bins, sequences and media

GBLABS INTEGRATION
Project Parking can integrate directly with Space Storage to archive or restore, transfer projects and media



WHAT MARQUIS CUSTOMERS SAY

"We often need to create different variations of the same material. Project Parking has been invaluable in assisting with this process. Previously, we would re-create the rushes to make a new promo version. This was a labour intensive process. Now by using Project Parking, we don't need to scrub the rushes to free-up the edit storage as we can store the project and all the media files associated with it together, offline. Time is saved and we also have infinitely more editorial flexibility due to the ease of access of the files. The team has described Project Parking as flawless. It is simple to use and gets the job done."

Mark Glennon, Head of Post Production at Zodiak Rights

"We were looking for a practical solution to migrate key Avid project data. Project Parking helped us to make an inventory of Avid projects and their assets, spanning across multiple workspaces on our existing ISIS system before the migration. Project Parking supplied an intuitive interface, enabling a straightforward migration of the media from one physical system to another."

Nick Symes, Director of Technology at Input Media

WHAT GB LABS CUSTOMERS SAY

"The decision to go with GB Labs was easy. GB Labs set up the system at the studio, allowing us to test the compatibility of Space with our systems before we made any decision. We'd evaluated other storage solutions but they seemed overly complicated and tied us into proprietary software. For us more software just means more problems."

Tom Box, founder at Blue-Zoo

Move Avid Projects to :
GBLabs Space or Space Echo Storage

Requirements

- Edit Systems :**
Avid Media Composer, Avid NewsCutter, Avid Symphony
- Edit Storage :**
Avid Interplay, Avid Unity, Avid ISIS, Standalone workstation, Shared NAS/SAN
- Hardware :**
Installed on Windows Avid Workstation PC or other Workstation with connections to the Avid Media (not supplied)

Founded in 1998, Marquis Broadcast provides a range of media integration products designed for the data-intensive and challenging requirements of today's fast-paced post-production and broadcast environments, enabling them to achieve maximum efficiencies from their workflow

About Us

About GBLabs

GBlabs and Space products deliver the sustained editing performance needed by multiple HD users. It was originally designed because we were concerned by the high support needs of SAN systems and the cost and complexity of installing a fibre channel or iSCSI network.

Sales Contact

MEAA Ben Miles
Phone +44 (0)118 984 4111
ben@marquisbroadcast.com

Americas Daniel Faulkner
Phone +1 615 324 3653
daniel@marquisbroadcast.com